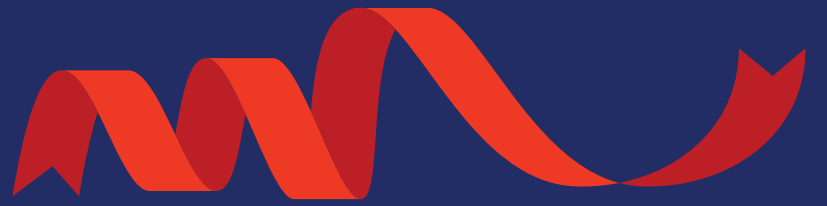


FEBRUARY 07.2019

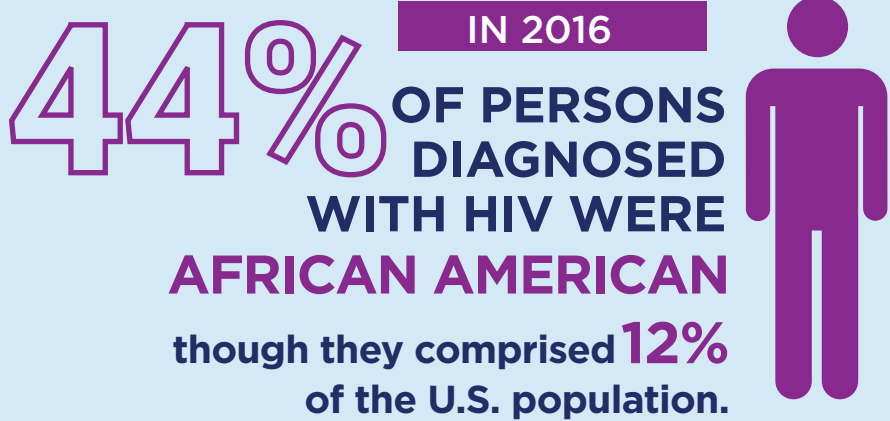
NATIONAL BLACK

HIV•AIDS

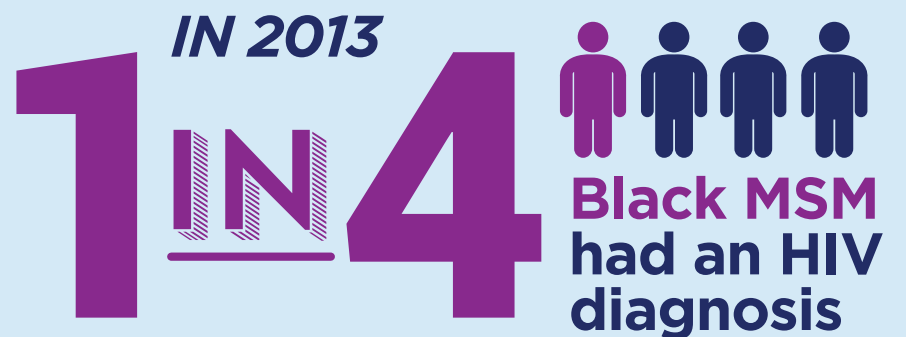


AWARENESS DAY

HIV DISPROPORTIONATELY AFFECTS BLACK PERSONS IN THE UNITED STATES, INCLUDING BLACK MEN WHO HAVE SEX WITH MEN (MSM)



<https://www.cdc.gov/hiv/group/raciaethnic/africanamericans/index.html>



http://www.emorycamp.org/item.php?i=98&utm_source=Listserv&utm_medium=infographic&utm_campaign=NBHAAD%20Infographic

2016 U.S. RESEARCH INDICATES THAT THE RATE OF

EXISTING HIV DIAGNOSES FOR BLACK MSM WAS

3.29 X

that for White MSM



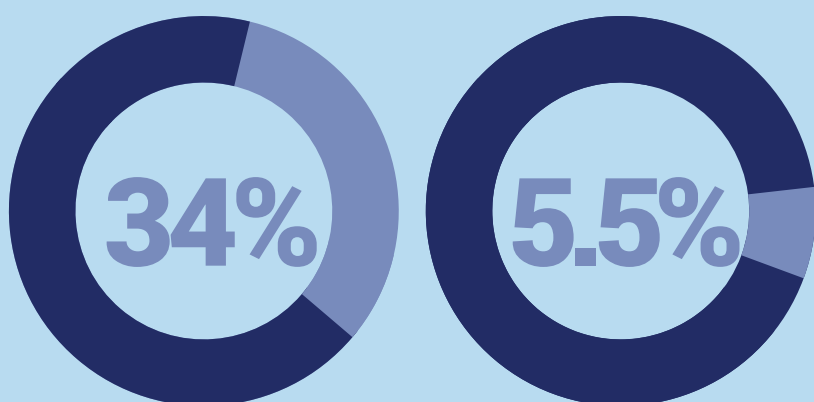
NEW HIV DIAGNOSES FOR BLACK MSM WAS

5.87 X

that for White MSM

http://www.emorycamp.org/item.php?i=76&utm_source=Listserv&utm_medium=infographic&utm_campaign=NBHAAD%20Infographic

20-24 Y/O MSM IN ATLANTA



HIV PREVALENCE AMONG BLACK MSM

HIV PREVALENCE AMONG WHITE MSM

Racial disparities in HIV are found among young MSM.

<https://journals.plos.org/plosone/article?id=10.1371/journal.pone.0090514>

Improvements along the PrEP continuum of care could help substantially reduce the burden of HIV and decrease disparities between black MSM and white MSM.

http://www.emorycamp.org/item.php?i=95&utm_source=Listserv&utm_medium=infographic&utm_campaign=NBHAAD%20Infographic

INCREASE LINKAGE & RETENTION IN CARE

69%

NEWLY DIAGNOSED HIV POSITIVE BLACK MSM WERE LINKED TO HIV MEDICAL CARE WITHIN 1 MONTH

<https://www.cdc.gov/hiv/group/msm/bmsm.html>

PrEP: preexposure prophylaxis
MSM- men who have sex with men

#CAMPresearch #NBHAAD

